

Pinnacle Endodontics of Georgia

Cameron Howard DMD MScD

WINTER 2014

An Insider's View

With our new build-out recently completed, we proudly display the office of Pinnacle Endodontics:



Office Entrance:



Office Reception Area:



Ergonomic Digital Operator:



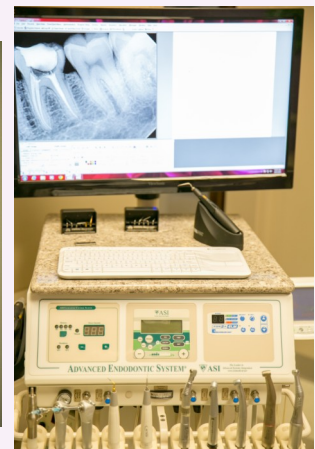
Front Desk:



Treatment Room Hallway:



ASI Doctor's Cart:



Pinnacle Endodontics Office Spotlight: Cissy Mathews - Office Manager

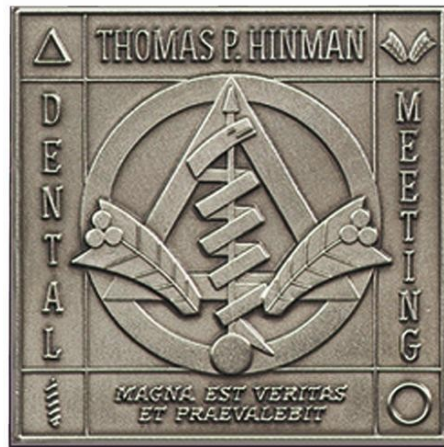
Originally from Charlotte, NC, Cissy has resided in metro Atlanta for over 25 years and has been in the dental field for over 30 years. She brings a wealth of knowledge and experience to provide our patients with the highest quality of care. As our Office Manager, Cissy binds the office together and keeps it running smoothly. She is skilled in answering questions about your insurance, billing issues and her great desire is to make your visit pleasant and comfortable. Outside of the office, she loves to cook and photograph dishes for her food blog, work in her garden, mentor young women, tackle 'a good project', play golf and spend time with her husband.



Dr. Howard Recently Inducted into the Thomas P. Hinman Dental Society

Dr. Howard was one of eleven dentists to be selected for induction into the Hinman Society. The initiation was held on September 15, 2014 at the Ritz Carlton Hotel in Buckhead. Qualification for induction into the Hinman Society includes verification of dental status and skill, personal sponsorship from three current Hinman Society members, and willingness to volunteer time during the annual Hinman Dental Society meeting.

The Thomas P Hinman Dental Society, a non-profit organization, is comprised of more than 750 member dentists primarily located in metropolitan Atlanta, Georgia. Founded in 1911 by Thomas P. Hinman, the Society is dedicated to the advancement of its membership through outstanding educational and professional development opportunities, as well as promoting the high practice standards of the field of dentistry through public advocacy and outreach. More information can be obtained via their website at www.hinman.org.



We're Growing!

Thanks to the support and trust that has been bestowed upon our practice by many dental practices, including your own practice, Pinnacle Endodontics of Georgia is currently planning to expand our practice to three days of patient care per week as of January 2015. We thank each and every one of you for your support in our growth. We look forward to continuing to serve you and your patients in the future!