

Comprehensive Care Treatment Matrix

- Examination
- Diagnosis
- Treatment planning and prognosis
- Treatment delivery

Colin Richman, DMD.
Director – Seattle Study Club of Atlanta

CSR

Comprehensive Care Treatment Matrix

Examination, Diagnosis

Treatment Plan and Prognosis, Treatment Delivery

- Head, neck, extra-oral and intra-oral
- Periodontal examination
- Endodontic , Oral Pathology and MFOS examination
- Dental examination
- Myo-functional and Orthodontic examination
- Esthetic examination

CSR

Facilitating a Patient's Choice for Better Dentistry

- Determine patient's desired expectation
- Complete a comprehensive exam to delineate risk factors
- Educate patient – how their risk factors affect their desired expectations (communication)
- Discuss means to reduce risk factors – treatment needed and alternatives, plus timing and staging
- Determine if patient can accept the price of treatment and work with them in this regard.

CSR

Images Buccal views

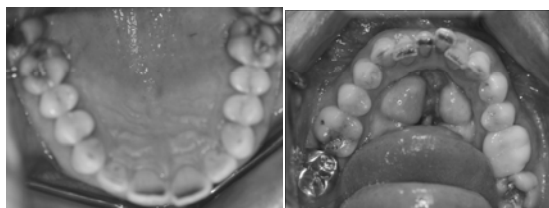


Soft tissue and cancer screen – within normal limits - SMOKER

CSR

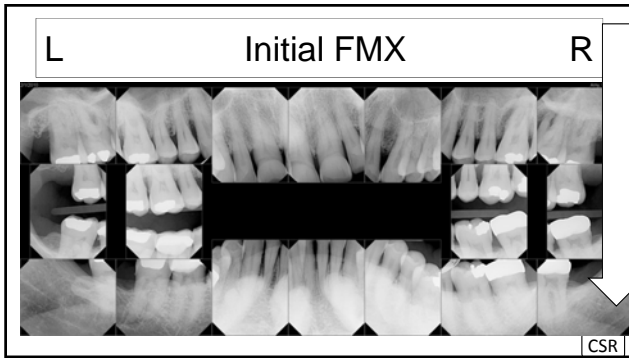
Occlusal Views

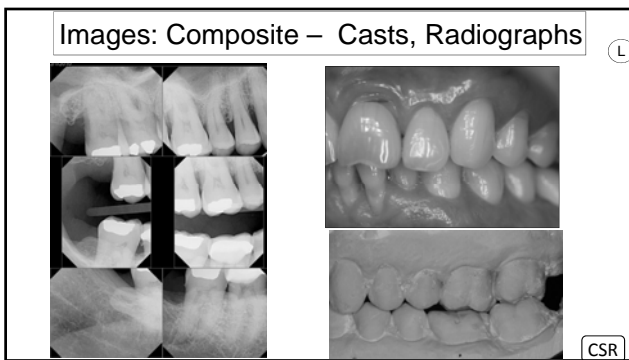
Max. Arch "U" shaped – Mand. Arch crowded

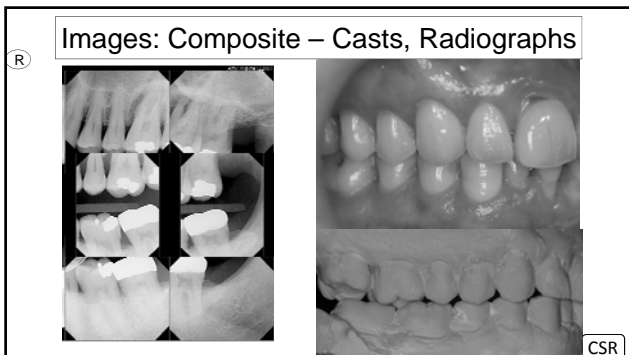


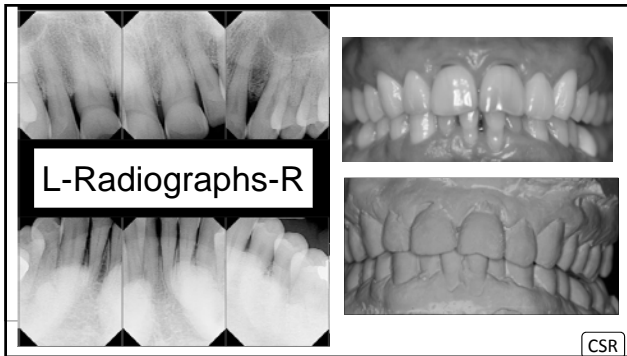
CSR

	1	2	3	4	5	6	7	8	9	10	11	12	13	14	15	16
F																
PG																
CG																
CG																
PG																
CG																
PG																
CG																
PG																
CG																
PG																
CG																
PG																
CG																
PG																
CG																
PG																
CG																
PG																
CG																
PG																
CG																
PG																
CG																
PG																
CG																
PG																
CG																
PG																
CG																
PG																
CG																
PG																
CG																
PG																
CG																
PG																
CG																
PG																
CG																
PG																
CG																
PG																
CG																
PG																
CG																
PG																
CG																
PG																
CG																
PG																
CG																
PG																
CG																
PG																
CG																
PG																
CG																
PG																
CG																
PG																
CG																
PG																
CG																
PG																
CG																
PG																
CG																
PG																
CG																
PG																
CG																
PG																
CG																
PG																
CG																
PG																
CG																
PG																
CG																
PG																
CG																
PG																
CG																
PG																
CG																
PG																
CG																
PG																
CG																
PG																
CG																
PG																
CG																
PG																
CG																
PG																
CG																
PG																
CG																
PG																
CG																
PG																
CG																
PG																
CG																
PG																
CG																
PG																
CG																
PG																
CG																
PG																
CG																
PG																
CG																
PG																
CG																
PG																
CG																
PG																
CG																
PG																
CG																
PG																
CG																
PG																
CG																
PG																
CG																
PG																
CG																
PG																
CG																
PG																
CG																
PG																
CG																
PG																
CG																
PG																
CG																
PG																
CG																
PG																
CG																
PG																
CG																
PG																
CG																
PG																
CG																
PG																
CG																
PG																
CG																









Diagnosis (Remember Mort Amsterdam)

- **Periodontal:** Gingivitis, Periodontitis, Recession, Soft/hard tissues.
- **Dental (tooth structure):** Enamel, Dentin, Roots, Caries susceptibility
- **Endodontic:** Caries Susceptibility
- **Myo-functional/occlusal:** Occlusion, Joints, Musculature, Habits, Gerd
- **Esthetic:** Lip line, Gingival line, Midline, Symmetry, Color, Texture, Tooth size
- **Other:** MFOS, Oral Pathology, Orthodontics

Predictable Treatment
Planning

Long term success

Kois

CSR

Risk Factor - KOIS

Periodontal

Biomechanical: (Tooth structure)

Functional: (Joint, Bite Chewing)

Dento-Facial: (Esthetic)

CSR

Phases of Dental Care

- Disease control
 - Caries, Endodontic
 - Periodontal and gingival infection
- Reconstructive Dentistry
 - Tooth/Teeth, Bridges, partials, crowns, implants
 - Periodontal: pocket reduction, regeneration, normal periodontal architectural configuration
 - Esthetic enhancement
- Maintenance
 - Professional and patient

CSR

A Comprehensively Treated Case Should be:

The easiest to maintain - RDH

The easiest to restore

The most esthetic

Produce a predictable long term result.

CSR
